

550-18000  
550-18001

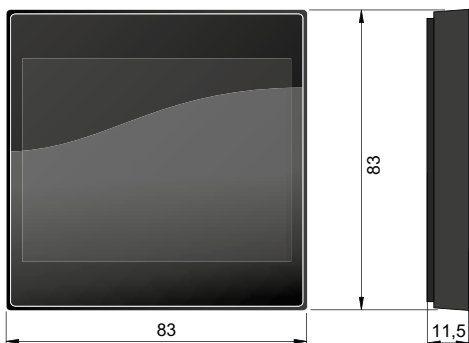
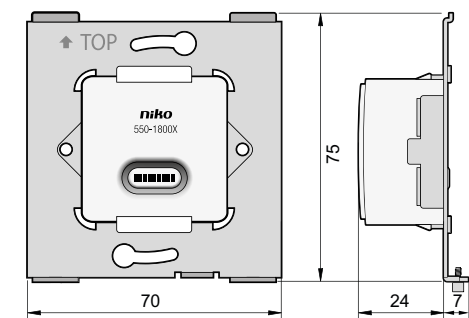


Niko Home Control  
4 year warranty

- EN** Digital black, connected control screen, 24 V
- NL** Digital black, geconnecteerd bedieningsscherm, 24 V
- FR** Digital black, écran de commande connecté, 24 V
- DE** Digital black, angeschlossener Bedienbildschirm, 24 V
- DK** Digital black, tilsluttet kontrolskærm, 24 V
- SE** Digital black, uppkoppladekskärn, 24 V
- NO** Digital black, tilkoblet kontrollskjerm, 24 V
- IT** Digital black, schermo di controllo collegato, 24 V
- PL** Digital black, podłączony ekran sterowania, 24 V
- SK** Digital black, pripojenej riadiacej obrazovke, 24 V

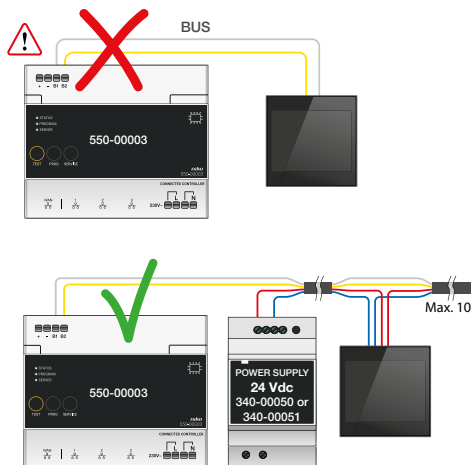
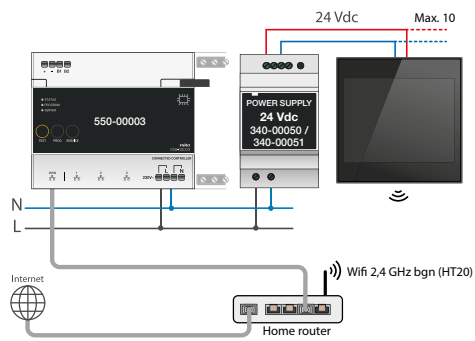
## Dimensions

Årmetingen / Dimensions / Abmessungen / Dimensioner / Mått / Dimensioner / Dimenzioni / Wymiary / Rozmery



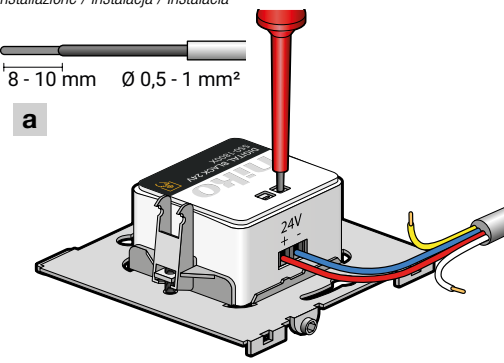
## Wiring

Åansluitschema / Schéma de raccordement / Verdrahtung / Tilslutningsskema / Kopplingschema / Ledningstilkopling / Cablaggio / Okablowanie / Instalácia



## Installation

Installatie / Installation / Installation / Installation / Installation / Installasjon / Installazione / Instalacja / Inštalácia

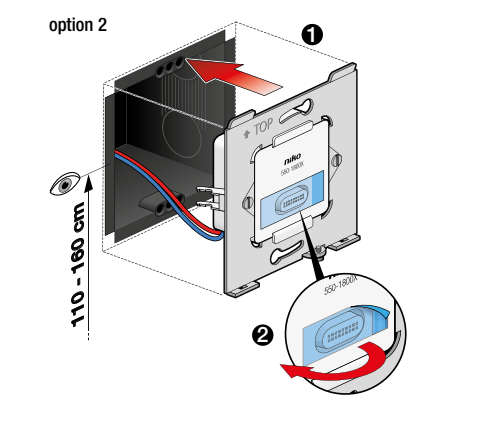
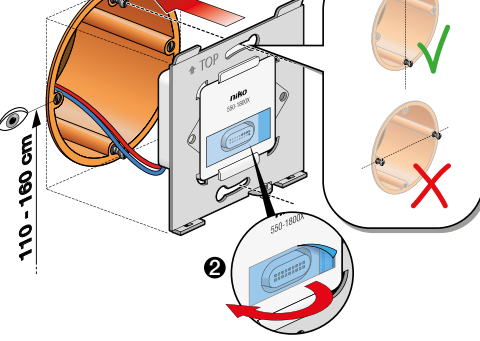


Max. cable length from power supply to the last connected Digital black. (maximum 10 Digital blacks per power supply 340-0005X).

Cable Section	Cable type & section			
	UTP	TPVF	SVV	3G1mm <sup>2</sup>
Ø	0,2 mm <sup>2</sup> 0,5 mm	0,3 mm <sup>2</sup> 0,6 mm	0,5 mm <sup>2</sup> 0,8 mm	1 mm <sup>2</sup> 1,2 mm
1 unit	≤55 m	≤80 m	≤140 m	≤250 m
2 units	≤30 m	≤40 m	≤70 m	≤140 m
3 units	≤20 m	≤25 m	≤45 m	≤90 m
4 units	≤15 m	≤20 m	≤35 m	≤70 m
5 units	≤11 m	≤15 m	≤30 m	≤55 m
6 units	≤10 m	≤12 m	≤25 m	≤45 m
7 units	-	≤11 m	≤20 m	≤40 m
8 units	-	≤10 m	≤15 m	≤35 m
9 units	-	-	≤10 m	≤30 m
10 units	-	-	≤10 m	≤25 m

## Thermostat function

Plaatsing / Placement / Platzierung / Anbringelse / Placering / Plassering / Sistemazione / Umieszczanie / Umiestnenie



The Digital black may only be used as a thermostat in normal residential conditions. To use the Digital black as a thermostat, your Niko Home Control installation needs to be equipped with the necessary heating or cooling module and connected controller.

Please consult <http://guide.niko.eu> for more information.

## Onboarding

Onboarding / Intégration / Onboarding / Onboarding / Onboarding / Onboarding / Onboarding / Wdrożenie / Onboarding

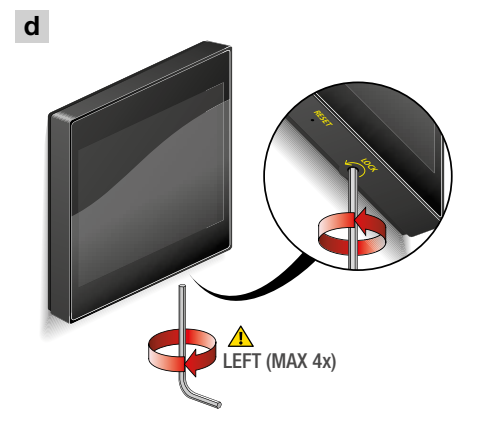
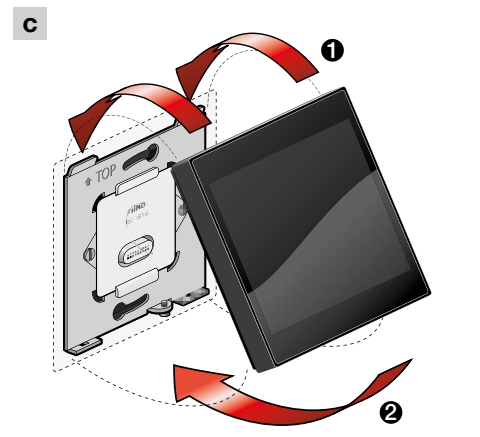
Before starting: Make sure your Niko Home Control installation has been correctly installed and programmed, is running programming software v. 2.8 or higher and has been registered on <http://mynikohomecontrol.niko.eu>

## Online guide

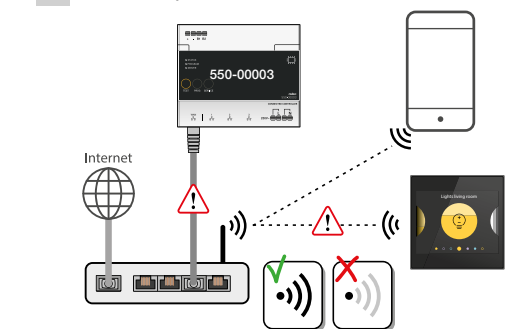
Online handleiding / Manuel utilisateur en ligne / Online Benutzershandbuch / Online brugervejledning / Online bruksanvisning / Online brukerhåndbok / Manuale utente online / Podręcznik użytkownika online / Online uživatelská príručica

Consult [guide.niko.eu](http://guide.niko.eu) for more information about the installation, the onboarding and the normal use and the thermostat function.

<http://guide.niko.eu>



## Network setup



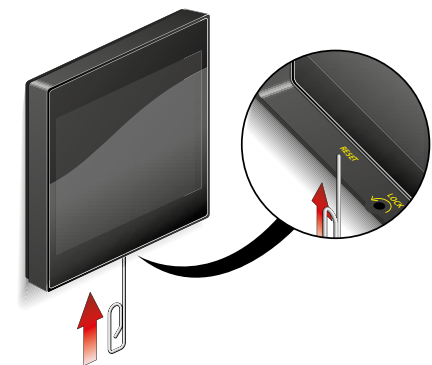
## Download the Niko home app



Please consult <http://guide.niko.eu> for more information.

## Reboot

Herstarten / Redémarrer / Neustarten / Genstart / Omstarta / Omstart / Riavvio / Restart / Reštart



Your Digital black's settings will be preserved. De instellingen van je Digital black blijven bewaard. Les paramètres de votre Digital black seront préservés. Die Einstellungen Ihres Digital black bleiben erhalten. Dine Digital black indstillinger bliver bevaret. Din Digital black inställningar kommer att bevaras. Dine Digital black innstillinger blir bevaret. Le impostazioni del tuo Digital black verranno mantenute. Twoje ustawienia Digital black zostaną zachowane. Nastavenia Digital black budú zachované.

